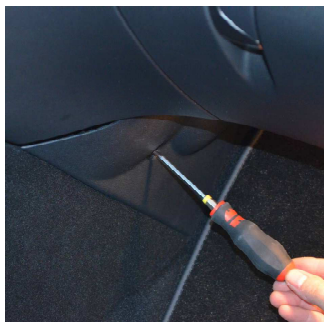


Art.-Nr.: **087285**
item#

Citroen DS5 ab 03/2012



Originalschrauben lösen



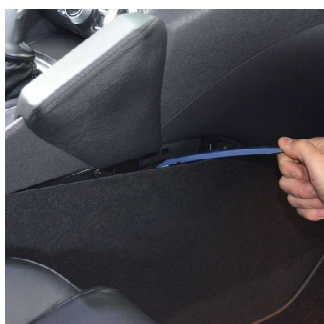
Unscrew original screws



Verkleidung des Mitteltunnels demontieren und die dahinterliegende Originalschraube lösen
Bitte benutzen Sie nur ein Kunststoff-Werkzeug!



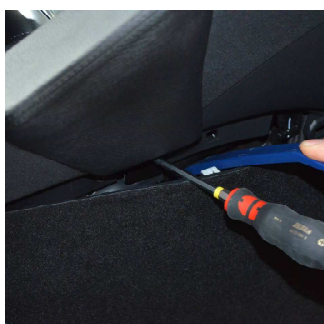
Remove cover of center console and loosen original screw behind
Please use only plastic tools!



Konsole wie abgebildet positionieren



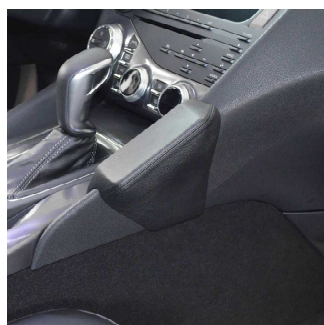
Position console as illustrated



Originalschraube durch das Blech wieder eindrehen



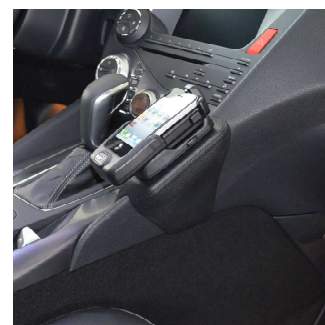
Reinstall original screw through metal plate



Alle Bauteile wieder montieren



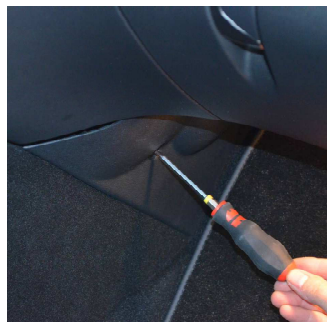
To remount all component parts



Änderungen vorbehalten Subject to change

Art. 087285

Citroen DS5 ab 03/2012



Desserrez les vis originales



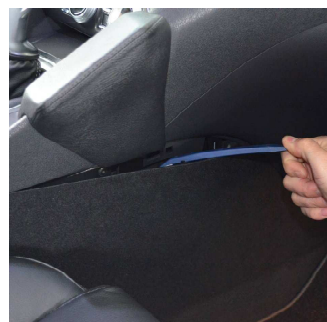
Suelte los tornillos originales



Démontez la couverture de la console centrale du véhicule et desserrez la vis originale située derrière
Veuillez n'utiliser qu'un outil de matière plastique



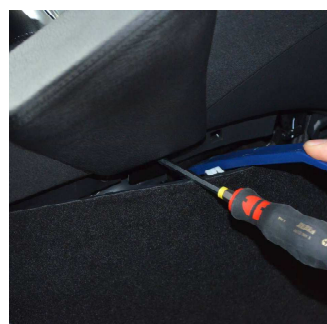
Desmante el revestimiento de la consola central y suelte el tornillo original detrás
Use sólo herramientas de plástico!



Positionnez la console comme illustré



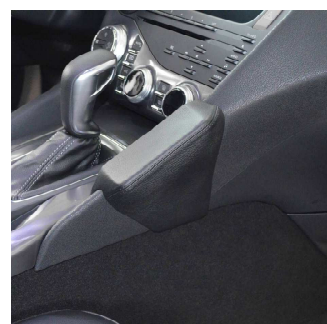
Posicione la consola como mostrado



Vissez de nouveau la vis originale à travers la tôle



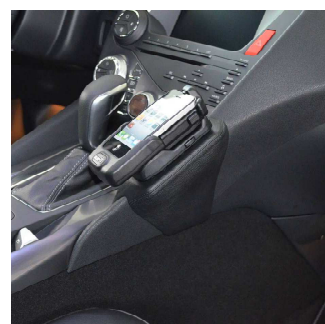
Reinstale el tornillo original por la chapa



Remontez les éléments de construction

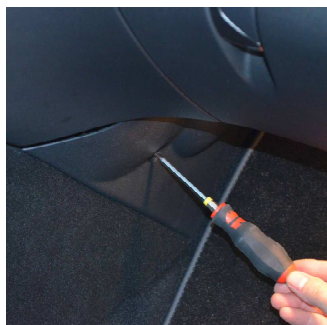


Remonte todos partes de construcción



Art. 087285

Citroen DS5 ab 03/2012



Originele schroefen losdraaien



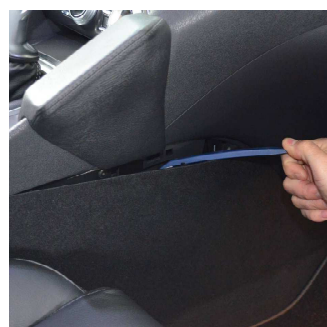
Poluzowac oryginalna srubes



Daarbij ook de orginele schroef losdraaien
Alleen plastic gereedschap gebruiken alstublieft!



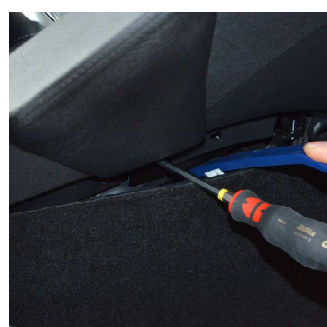
Tapicerke srodkowego tunelu zdemontuj o odkrec z tylu lezace sruby
Prosze uzywac tylko narzedzi z tworzywa sztucznego.



Konsole zoals afgebeeld positioneren



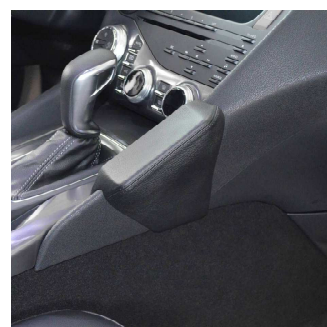
Uchwyt umiescic jak na przedstawionym zdjeciu.



Reinstale el tornillo original por la chapa



Oryginalna srube ponownie przykrecic przez blaszke



Alle gedemonteerde delen weer monteren



Wszystkie elementy ponownie zamontowac

